

AMELOBLASTIN IS NOT IMPLICATED IN BONE REMODELLING AND REPAIR

Shingo Kuroda^{1,2}, Rima Wazen¹, Karine Sellin¹, Eiji Tanaka², Pierre Moffatt³ and Antonio Nanci^{1*}

¹Laboratory for the Study of Calcified Tissues and Biomaterials, Department of Stomatology, Faculty of Dentistry, Université de Montréal, Montréal, Québec, Canada

²Department of Orthodontics and Dentofacial Orthopedics, Institute of Health Biosciences, The University of Tokushima Graduate School, Tokushima, Japan

³Shriners Hospital for Children, Montréal, Québec, Canada

Abstract

Ameloblastin (AMBN) is an enamel matrix protein produced by ameloblasts. It has been suggested that AMBN might also be implicated in craniofacial bone formation. Our objective was to determine whether AMBN has an effect on osteogenic mineralisation and influences bone remodelling and repair. MC3T3-E1 cells were screened for endogenous expression of enamel proteins using real time PCR. Various osteogenic cells were infected with lentivirus encoding for AMBN and protein expression was verified using immunohistochemistry. Cultures were stained with alizarin red and mineralisation was quantified. Healing bone was probed for expression of AMBN by DNA microarray analysis. Tooth extraction, experimental tooth movement (ETM), and creation of a non-critical size bone defect in the tibia (BDT) were carried out in wild type and AMBN^{Δ5-6} mutant mice. Tissues were processed for immunolabelling of AMBN and Bril, an osteoblast specific protein associated with active bone formation. MC3T3-E1 cells and healing bone showed no significant expression of AMBN. Overexpression of AMBN in osteogenic cultures induced no noticeable changes in mineralisation. In wild type mice, AMBN was immunodetected in ameloblasts and enamel, but not in normal bone, and at sites where bone remodelling and repair were induced. Bone remodelling during ETM and BDT repair in AMBN^{Δ5-6} mice were not significantly different from that in wild type animals. Our results suggest that AMBN does not influence osteogenic activity *in vitro* under the conditions used, and does not participate in craniofacial bone remodelling under mechanical stress and in repair of non-critical size bone defects.

Keywords: Ameloblastin, Bril, bone formation, mechanical stress.

*Address for correspondence:

Antonio Nanci
Laboratory for the Study of Calcified Tissues and Biomaterials

Department of Stomatology, Faculty of Dentistry
Université de Montréal, 2900 Edouard Montpetit
Pavillon Roger-Gaudry, Room A-212
H3T1J4 Montréal, Québec, Canada

Telephone Number: +514-3435846

FAX Number: +514-3432233

E-mail: antonio.nanci@umontreal.ca

Introduction

Ameloblastin (AMBN) is the second most abundant extracellular matrix protein produced by ameloblasts and is found mainly in forming enamel (Hu *et al.*, 2005). The AMBN gene is classified as a member of the secretory calcium-binding phosphoprotein (SCPP) cluster of evolutionally-related molecules. This cluster is associated with regulation of mineral deposition (Kawasaki and Weiss, 2003). Intact AMBN is short-lived and accumulates at enamel growth sites where enamel crystals elongate (Nanci *et al.*, 1998). In a mutant mouse model expressing a truncated form of AMBN lacking the portion encoded by exons 5 and 6 (AMBN^{Δ5-6}), formation of the enamel layer is abrogated (Smith *et al.*, 2009; Wazen *et al.*, 2009).

Recently, expression of AMBN was reported in rat embryos during intramembranous and endochondral ossification (Spahr *et al.*, 2006). Other investigations suggested that the protein has an effect on differentiation of mesenchymal stem cells (Tambursten *et al.*, 2010; Tambursten *et al.*, 2011), and on osteogenic differentiation (Iizuka *et al.*, 2011). These reports have raised the possibility that AMBN might be implicated not only in amelogenesis but also in osteogenesis.

To test whether AMBN plays a role in bone formation we have (1) used lentiviral vectors to over express the full-length protein in various osteogenic cells and quantified mineral deposition, and (2) examined bone formation in wild type and AMBN^{Δ5-6} mice following application of mechanical stress in an experimental tooth movement (ETM) model, and in tibia after creation of a non-critical size bone defect (BDT). Bone formation was determined histologically and by immunolabelling for bone-restricted Ifitm-like protein (Bril) (Moffatt *et al.*, 2008), an osteoblast specific membrane protein associated with active bone formation. The results show that AMBN participates neither in mineralisation in osteogenic cell cultures nor in craniofacial bone remodelling under mechanical stress and bone repair in long bones.

Materials and Methods

All animal procedures were approved by the Comité de déontologie de l'expérimentation sur les animaux of Université de Montréal.

Lentiviral vector production

Lentivirus encoding for green fluorescent protein (LV-GFP) or full-length AMBN (LV-AMBN), under the

transcriptional control of the EF1- α promoter, were produced in human embryonic kidney cell line (HEK293, ATCC, Manassas, VA, USA) as previously reported (Wazen *et al.*, 2006). Lentivirus titers were determined in HEK293 by evaluating the number of AMBN- and GFP-positive cells by fluorescence imaging at 48 h post-infection and titers ranged from 1×10^7 to 1×10^8 infectious units (IU)/mL.

Cell culture studies MC3T3-E1 and SaOS-2 cells

The mouse MC3T3-E1 (ATCC CRL-2593) and the human osteosarcoma SaOS-2 cells lines (ATCC HTB-85) were used (Wang *et al.*, 1999; Atkins *et al.*, 2007). Cells were plated on glass cover slips for immunofluorescence analysis (24-well plates, 20,000 cells/well) and directly on plastic for mineralisation assays (6-well plates, 60,000 cells/well) and maintained in α -minimal essential medium (alpha-MEM) (Invitrogen, Burlington, ON, Canada) with 10 % foetal bovine serum (FBS), 50 μ g/mL ascorbic acid (Sigma-Aldrich, Oakville, Ontario, Canada) and 10 mM β -glycerophosphate (Sigma-Aldrich), and medium changed every 3 days.

Cell isolation of rat primary calvaria-derived osteogenic cells

Osteogenic cells were isolated by sequential trypsin/collagenase digestion of calvarial bone from newborn (2-4 d) Wistar rats (Charles River, St. Constant, QC, Canada) (Nanci *et al.*, 1996; Irie *et al.*, 1998). Cells were plated on glass cover slips for immunofluorescence analysis (24-well plates, 20,000 cells/well) and directly on plastic for mineralisation assays (6-well plates, 60,000 cells/well), and cultured in minimum essential medium with Earle's salts (MEM Earle's) supplemented with 10 % FBS, 1 % penicillin-streptomycin (Invitrogen), 25 μ g/mL ascorbic acid and 10 mM β -glycerophosphate, and medium changed every 3 days.

Real-time PCR analysis of gene expression in MC3T3-E1 cells

At different time points of cell differentiation (day 1, 3, 8, 15, and 22 of cell culture), total RNA from MC3T3-E1 cells was extracted using Trizol[®] (Invitrogen) as recommended by the manufacturer. Total RNA concentration was determined spectrophotometrically at 260 nm and cDNA prepared using the High Capacity cDNA Reverse Transcription Kit (Applied Biosystems, Foster City, CA, USA). The expression of amelogenin (*Amel*: Mm00711642_m1), ameloblastin (*Ambn*: Mm00477485_m1), matrix Gla protein (*Mgp*: Mm00485009_m1), alkaline phosphatase (*Alp*: Mm00475834_m1), bone restricted ifitm-like protein (*Bril*: Mm00804741_g1), osteocalcin (*Ocn*: Mm03413826_mH) and bone sialoprotein (*Ibsp*: Mm00492555_m1) was analysed using the indicated TaqMan probes and the TaqMan Universal PCR Master Mix (Applied Biosystems) on an ABI 7500 Real-Time PCR machine. The threshold cycle numbers were normalised to that of beta-actin (TaqMan 4352933E) and values expressed as $2^{-\Delta\Delta C_t}$ method (Schmittgen and Livak, 2008). Data are presented on a log scale.

Overexpression of GFP and AMBN in cells infected with lentivirus

Production of stable cells lines over expressing GFP and AMBN was reported previously (Wazen *et al.*, 2006). For SaOS-2 and primary calvaria-derived cells, at confluency (day 3), cells were infected with the viral vectors using doses ranging from 2.5×10^5 to 4.5×10^6 IU/mL in the presence of 8 μ g/mL polybrene (Sigma-Aldrich). Both non-infected cells and LV-GFP infected cells were used as controls. After 24 h, the medium was replaced. Forty-eight hours later, the efficiency of transduction was assessed by immunofluorescence (AMBN) and epifluorescence (GFP).

Detection of transgene expression in cells by immunofluorescence

Forty-eight hours post-infection with LV-AMBN, some cells grown on cover slips were fixed and processed for immunofluorescence labelling with a primary antibody against recombinant rat AMBN (1:300/1 h; courtesy of Dr. Krebsbach) (Krebsbach *et al.*, 1996) followed by a Alexa fluor 594 (red fluorescence)-conjugated goat secondary antibody (1:500/1 h; Molecular Probes, Eugene, OR, USA) (de Oliveira *et al.*, 2003). All cell cultures were mounted with ProLong Gold antifade reagent with 4', 6-diamidino-2'-phenylindole dihydrochloride (DAPI; Invitrogen) to counterstain nuclei in blue, and examined under a fluorescence microscope (Axiophot; Carl Zeiss, Oberkochen, Germany).

Detection of AMBN in Western blotting

Stable MC3T3-E1 cells over expressing GFP or AMBN were seeded and grown to confluence as mentioned above. Cells were washed and incubated with serum-free media for 72 h. Conditioned media were collected at 24 and 72 h, precipitated with trichloroacetic acid (final concentration 10 % (v/v)), processed for Western blot analysis under denaturing conditions (Moffatt *et al.*, 2004) and separated on a Ready Gel[®] precast 15 % Tris-HCl polyacrylamide gels (Nanci *et al.*, 1998). Proteins were transferred onto 0.45 μ m nitrocellulose membranes and probed with AMBN antibody (1:2,000), all in PBS-0.05 % Tween 20 (Fisher Scientific, Whitby, ON, Canada) with 5 % skim milk. Detection was performed with a secondary goat anti-rabbit antibody IgG-peroxidase conjugate (1:30,000/1 h; Sigma-Aldrich), using the ECL plus[™] Western blotting detection system (GE Amersham Biosciences, QC, Canada) as per recommendations by the manufacturer. Broad range molecular weight protein markers (Bio-Rad) were also loaded.

Detection and quantification of mineralisation

At day 7 (primary calvaria-derived cells), day 9 (SaOS-2) and day 21 (MC3T3-E1), cultures (n = 6) from non-infected control, GFP-infected control and AMBN-infected groups were briefly rinsed with PBS followed by fixation with 70 % ethanol for 1 h at 4 °C. Cultures were washed with distilled water and stained for 10 min, at room temperature, with a 2 % (w/v) alizarin red solution (pH 4.2, Sigma-Aldrich), and then rinsed 5 times with water to remove nonspecific stain. Stained cultures of primary calvaria-derived and

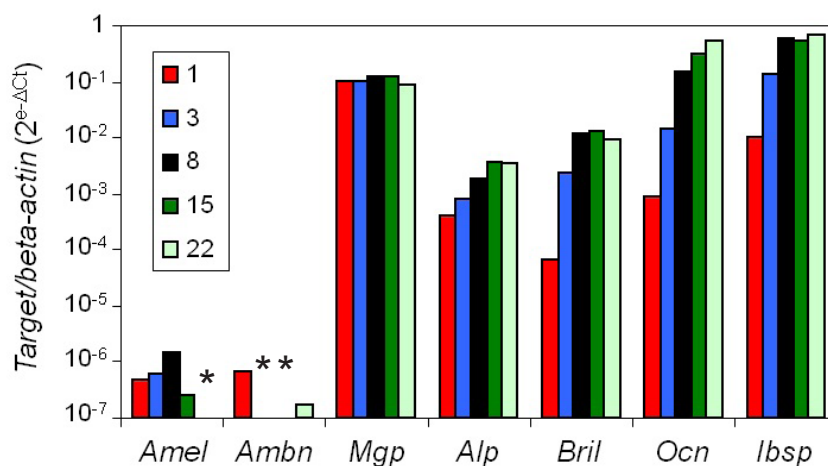


Fig. 1. Quantitative real time PCR analysis of MC3T3-E1 osteogenic cells cultured in osteogenic media for 1, 3, 8, 15 and 22 days. The values are plotted on a logarithmic scale and show that the level of expression of enamel matrix proteins (Ambn and Amel) was at least 3-orders of magnitude lower than that of bone-specific markers and near detectability limit. Alp, alkaline phosphatase; Amel, amelogenin; Ambn, ameloblastin; Bril, bone restricted ifitm-like protein; Ibsp, bone sialoprotein; Mgp, matrix Gla protein; Ocn, osteocalcin; *, not detectable.

SaOS-2 cells were photographed and then destained using 10 % (w/v) cetylpyridinium chloride (Sigma-Aldrich) in 10 mM sodium phosphate, pH 7.0, for 15 min, at room temperature (Stanford *et al.*, 1995). Calcium concentrations were then determined by the absorbance measured at 570/620 nm on a microplate reader AD340 (Beckman Coulter Inc., Brea, CA, USA). Mineralisation was estimated histomorphometrically in alizarin red stained cultures of MC3T3-E1 cells using analySIS[®] software (Soft Imaging System GmbH, Lakewood, CO, USA). One-way analysis of variance (ANOVA) was used to evaluate the differences among the 3 groups. A probability of $p < 0.05$ was considered significant.

Animal experimental procedures

Twelve AMBN^{Δ5-6} mice and 17 wild type C57Bl/6 mice weighting 25 ± 5 g (Charles Rivers) were used. The original AMBN mutant mouse model was created and obtained from Dr. Yamada (Fukumoto *et al.*, 2004). Genotyping was done by PCR analysis of genomic DNA extracted from mouse tail clips as described by Wazen *et al.* (2009).

Animals were anaesthetised with an intraperitoneal injection of a mixture of 50 mg/kg of ketamine hydrochloride (Ketaset[®]; Wyeth Canada, St. Laurent, QC, Canada), 5 mg/kg of xylazine (Rompun[®]; Bayer Inc., Toronto, ON, Canada) and 1 mg/kg of acepromazine maleate (Acevet 10[®]; Vétoquinol, Lavaltrie, QC, Canada). In a preliminary study aimed at examining AMBN and Bril expression in actively-forming bone, the maxillary left first molar of wild type mice was extracted with an excavator, and sacrificed 5 days after extraction. For ETM, nickel-titanium wire, 0.012 inches (304.8 μ m) in diameter, was fixed to the maxillary incisor by means of a composite resin for orthodontic bonding (Transbond[®]; 3M Unitek, St. Paul, MN, USA), and the left maxillary 1st molar was moved toward the palatal side with 10 g load as described previously, while the untreated contralateral teeth served as control (Sakai *et al.*, 2009). For BDT, an incision was

made over the left anterior-proximal tibia, and a hole was drilled mono-cortically with a high-speed dental engine (20,000 rpm) using a 1.0 mm carbide bar (Brasseler USA, Savannah, GA, USA). A resorbable collagen membrane (neomem[®], Citagenix Inc., Laval, QC, Canada) was placed to cover the hole for reducing blood flow from the wound. Finally, wounds were closed with metal clips. Following experimental manipulations, animals received an injection of buprenorphine hydrochloride (Temgesic[®]; Reckitt and Colman, Hull, UK).

Tissue processing for histology

Animals were anaesthetised with 20 % chloral hydrate solution (0.4 mg/g body weight; Fisher Scientific) and ketamine hydrochloride (10 mg/kg) and sacrificed by perfusion through the left ventricle with Ringer's lactate (Hospira, Montreal, QC, Canada) for 30 s, followed by a fixative solution consisting of 4% paraformaldehyde (Acros organics, Morris Plains, NJ) and 0.1 % glutaraldehyde (Electron Microscopy Sciences, Washington, PA, USA) in 0.08 M sodium cacodylate (Electron Microscopy Sciences) buffer containing 0.05 % calcium chloride (JT Baker, Phillipsburg, NJ, USA), pH 7.2, for 20 min. For tooth extraction studies, animals were sacrificed at day 5 post-surgery. For BDT and ETM, mice were sacrificed at days 5, 7 and 14 after the procedure (Nanci *et al.*, 2004). Maxillae and tibiae were dissected, and specimens were immersed in the same fixative solution overnight at 4 °C and decalcified with Plank-Rychlo's solution consisting of 0.5 M aluminium chloride (Sigma-Aldrich) containing 8.5 % hydrochloric acid (Fisher Scientific) and 5.4 % formic acid (JT Baker) for 7 days at 4 °C (Schroeder, 1991). Decalcified samples were washed for 24 h in 0.1 M sodium cacodylate buffer, pH 7.2, processed for paraffin embedding and sectioned at 5 μ m thickness. For morphological analyses, sections were stained with haematoxylin and eosin.

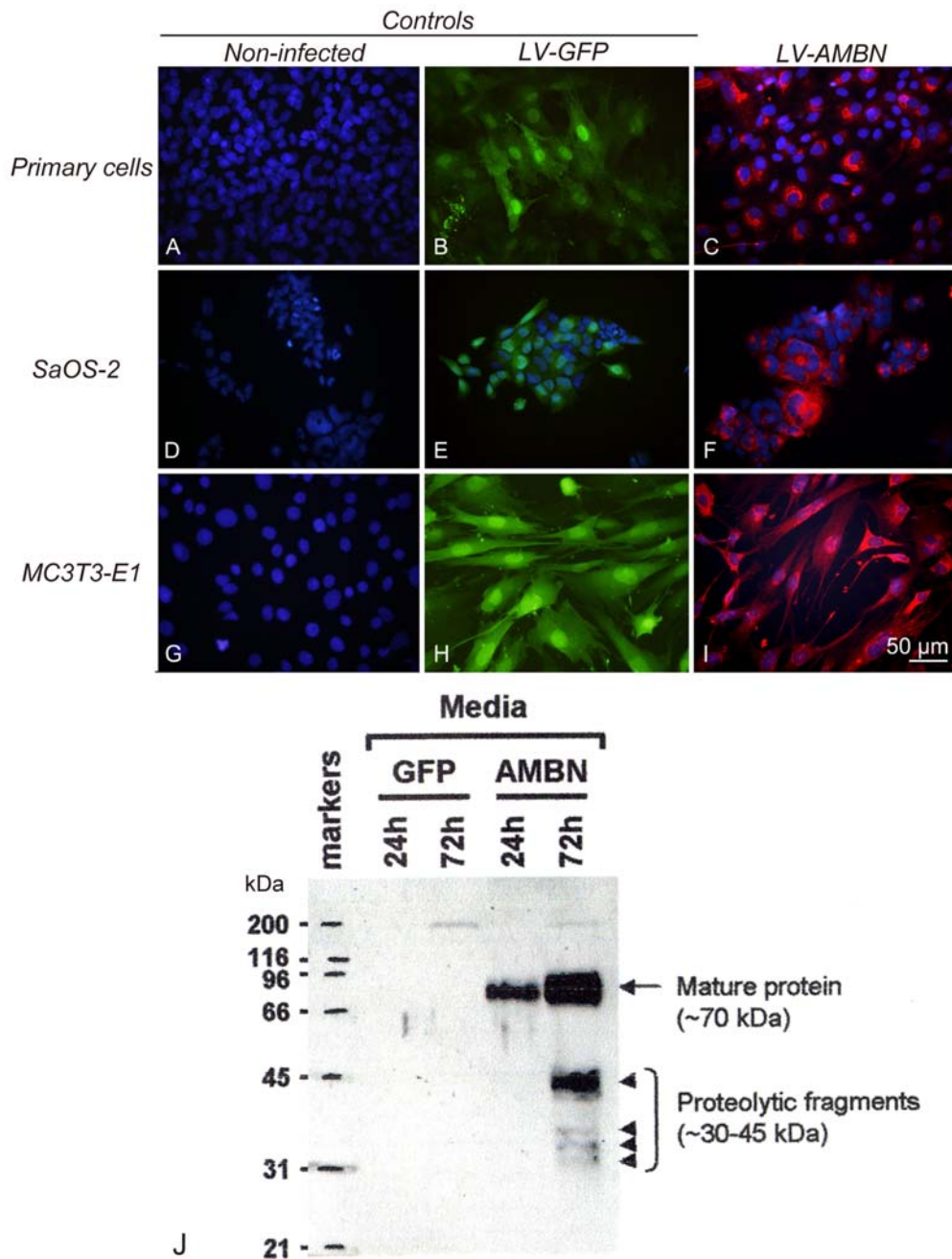


Fig. 2. Expression of AMBN and GFP in lentivirus-transduced primary rat calvaria-derived osteogenic cells (**A-C**), human SaOS-2 (**D-F**) and mouse MC3T3-E1 (**G-I**) cells, at 48 h post-infection, with an infectious unit of 4.5×10^5 , 4.5×10^6 and 2.5×10^5 IU/mL, respectively. GFP expression is distributed throughout the cytoplasm (**B, E, H**), while AMBN is immunolocalised in the perinuclear region of the cells where the Golgi is found (**C, F, I**). Non-infected cells were used as controls and did not show any labelling for AMBN (**A, D, G**). Western blot detection of AMBN produced by MC3T3-E1 cells (**J**). AMBN-specific bands were only visible in conditioned media of AMBN over expressing cells at 24 h and 72 h.

Tissue processing of healing bone for DNA microarray analysis of gene expression of osteogenic molecules

At day 3, some animals of the BDT experimental group ($n = 5$) were anaesthetised, and the bone at the defect site was harvested using a trephine drill (2 mm diameter, ACE Dental Implant System, Brockton, MA, USA) fitted on a slow-speed handpiece (Physiodispenser 3000, Henry Schein Inc., Niagara On The Lake, ON, Canada), placed in Trizol® (Invitrogen) and immediately homogenisation with

the Polytron® (Kinematic Inc., Bohemia, NY, USA) at full speed for 1 min. Total RNA was extracted from the samples as recommended by manufacturer and purified with the RNeasy® MiniElute® Cleanup kit (Qiagen, Mississauga, ON, Canada). The extracted cRNA was hybridised with the mouse Oligo GEarray® (SuperArray Bioscience, Frederick, MD, USA) as recommended by the manufacturer. This array contains the cDNA for various osteogenic molecules as well as for AMBN.

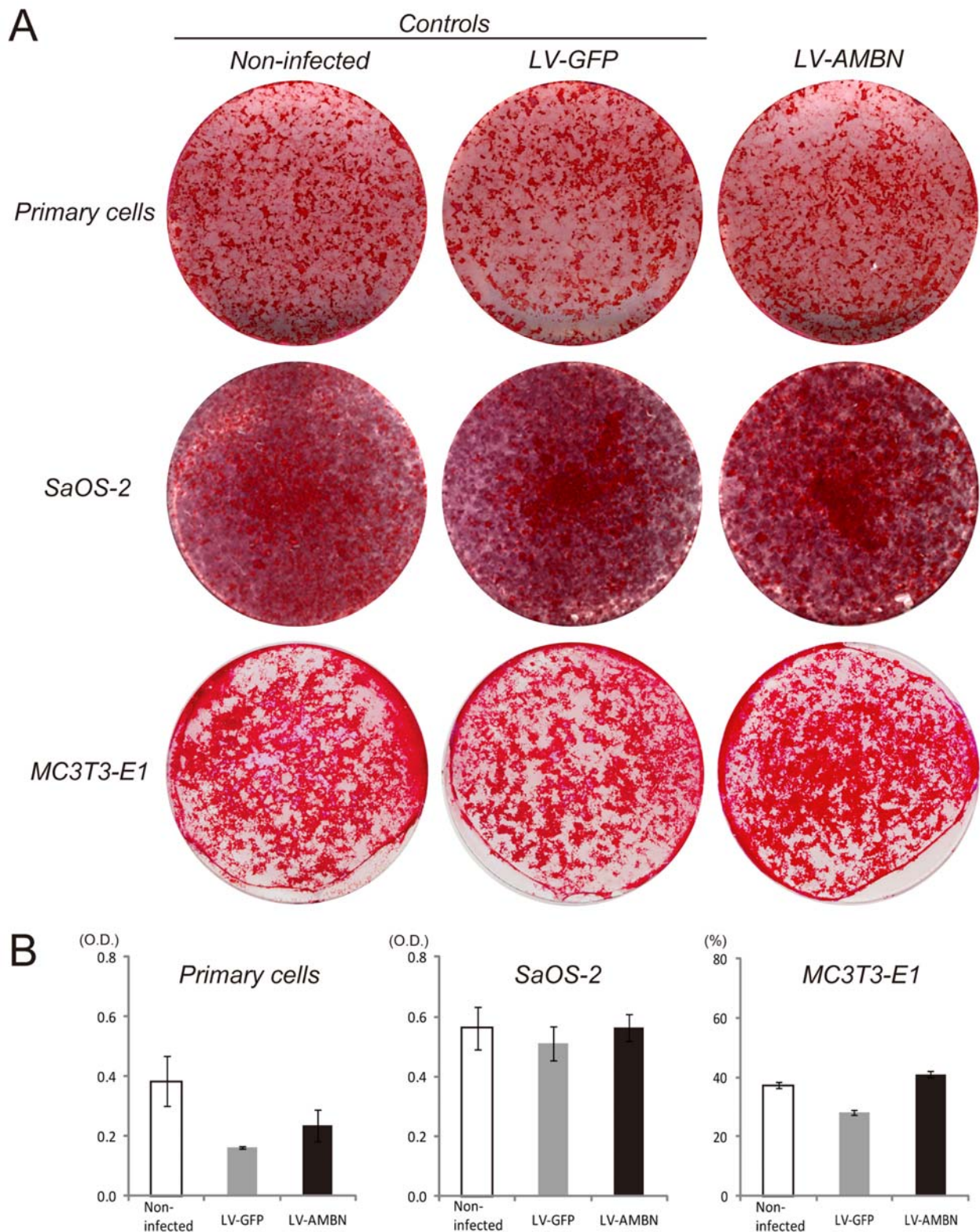


Fig. 3. Lentivirus-mediated expression of AMBN did not have an effect on the mineralisation of primary rat calvaria-derived osteogenic cells, human SaOS-2 and mouse MC3T3-E1 cells. Cell cultures were infected with the lentivirus, stopped at day 7, 9 and 21, respectively, and analysed for mineralisation by alizarin red staining (**A**). Controls consisted of non-infected cells and LV-GFP infected cells. Quantification of mineralisation (primary cells and SaOS-2) and histomorphometric analyses (MC3T3-E1) did not reveal any significant differences in the mineralisation process of AMBN-overexpressing osteogenic cell cultures (**B**). O.D., optical density at 570/620 nm.

Immunohistochemistry

Sections were deparaffinised with d-limonene based solvent (Citrisolv[®]; Fisher Scientific), rehydrated through a descending ethanol series and washed in distilled water. In order to avoid non-specific sticking, sections were blocked with 0.01 M phosphate-buffered saline (PBS), pH 7.4, containing 5 % skim milk for 30 min at room temperature. After blocking, the sections were incubated with a primary antibodies to AMBN (1:2,000) or Bril (1:2,000) (Moffatt *et al.*, 2008) for 3 h at room temperature. Sections were washed with 0.01 M PBS containing 0.05 % (v/v) Tween 20, followed by treatment with the Envision TM+ System, HRP labelled polymer anti-rabbit kit (Dako, Carpinteria, CA, USA) as recommended by the manufacturer. Visualisation was performed with 3, 3'-diaminobenzidine and sections were counterstained with 0.5 % methyl green (Dako).

Results

Effect of AMBN on mineralisation *in vitro*

Quantitative real time PCR analysis was used to investigate the endogenous level of expression of enamel matrix proteins (Amel and Ambn) in MC3T3-E1 cells cultured in osteogenic media (Fig. 1). At any time-points of cell culture, expression of Amel and Ambn was at least 3-orders of magnitude lower than that of bone-specific markers (Mgp, Alp, Bril, Ocn and Ibsp), and near detection limit.

In stably over expressing MC3T3-E1 cell cultures and 48 h post-infection (SaOS-2, primary osteogenic cells), GFP expression was immunodetected throughout the cell, including the nucleus (Figs. 2B, E, and H) whereas AMBN was found in the perinuclear region where the Golgi apparatus is found (Figs. 2C, F, and I). Immunoreactivity for AMBN was not detected in control primary osteogenic cells, MC3T3-E1 and SaOS-2 cells (Figs. 2A, D, and G). Secretion of AMBN by MC3T3-E1 cells was readily detected with Western blots and significantly increased in a time-dependent manner (Fig. 2J). Histomorphometric analysis of alizarin red staining and quantification of mineralisation, however, indicated that over expression of AMBN had no noticeable effect on osteogenic mineralisation in the 3 cell types examined, as compared to the non-infected control cells or the LV-GFP infected cells (Fig. 3).

AMBN is not implicated in bone formation in various animal models

In wild type mice, AMBN was clearly immunodetected in enamel and ameloblasts from presecretion to the maturation stage of amelogenesis (Fig. 4A), consistent with our previous work (Nanci *et al.*, 1998; Wazen *et al.* 2009). At day 5 after tooth extraction, AMBN was not expressed in the alveolar bone at the tooth extraction site (Fig. 4B), which intensely showed Bril immunolabelling (Fig. 4C).

Gene profiling using DNA microarrays revealed no detectable expression of Ambn in healing bone (position #4 on the array) (Fig. 5).

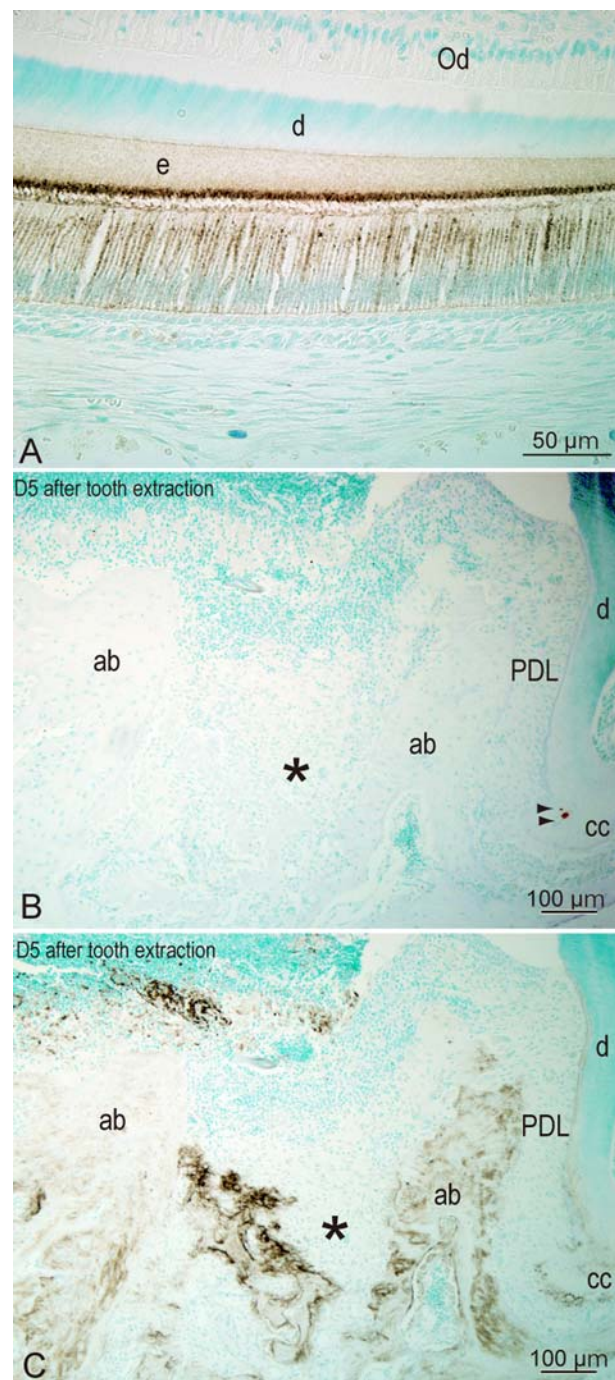


Fig. 4. Immunolabelling of AMBN and Bril in the periodontal tissue. (A) Immunolabelling for AMBN was clearly detected in secretory stage ameloblasts in the maxillary incisor. (B) Five days (D5) after extraction of the maxillary first molar, expression of AMBN was only detected in few cells entrapped in cellular cementum (cc) at the root apex (arrowheads), but not in the alveolar bone (ab), including newly-formed bone at the extraction site (asterisk). (C) In a serial section of (B), there was an intense expression of Bril indicating active bone formation at the extraction site. e, enamel; d, dentin; Od, odontoblasts; PDL, periodontal ligament.

In order to study the expression pattern of AMBN under mechanical stimulus, a nickel-titanium wire placed on the maxillary incisor provided sufficient orthodontic force to tip the first molar towards the palate. The width of periodontal ligament was decreased on the compression area and increased on the tension area (Figs. 6B and J). At day 5 and 7, as judged by the abundance of osteoclasts, bone resorption was observed on the compression area (Figs. 6C and K). At day 14, the width of periodontal ligament on both the compression and tension areas was back to the normal range (Figs. 6D and L). These morphological changes were similar in wild type and AMBN^{Δ5-6} mice.

In order to examine active bone formation, we performed immunolabelling for Bril. On the untreated side, expression of Bril was observed in the cells on the surface of alveolar bone and cementum on the mesial side from the cervical to the apical extremity of the root (Figs. 6E and M). At day 5 and 7 after ETM, Bril was immunodetected in the cells on the surface of the alveolar bone and facing cellular cementum on the tension area, where new tissues actively form (Figs 6F, G, N, and O). At day 14, expression of Bril was also present in the cells on the surface of alveolar bone and cementum on the compression area (Figs 6H and P). There was no difference in Bril expression pattern between the wild type and AMBN mutant mice. There was also no difference in AMBN expression, as its labelling was observed in cellular cementum but not in the alveolar bone, at any time points examined (Figs. 6Q-T).

In the BDT model, at day 5 after surgery, in wild type mice healing was evident at the periphery of the defect, and the newly-formed bone was labelled for Bril (Figs. 7D and J). At day 7, bone formation had extended toward the centre of the defect, and this bone was more immunoreactive than the older peripheral bone (Figs. 7E and K). By day 14, the defect was almost filled up with new bone and Bril expression was lower throughout (Figs. 7F and J). This time-dependent pattern of bone regeneration and Brill expression was similar in AMBN^{Δ5-6} mice. Also, at all time intervals examined, there was no reactivity for AMBN in the healing bone under the tissue processing and incubation conditions used (Figs. 7M-O).

Incubations with pre-immune serum and omission of primary antibody only resulted in background labelling throughout the tissue section (data not shown).

Discussion

There have been some recent reports suggesting that AMBN may be involved in bone formation (Tamburstuen *et al.*, 2010; Tamburstuen *et al.*, 2011; Iizuka *et al.*, 2011) and that, like its sister protein AMEL, it may be capable of promoting bone repair (Bosshardt, 2008; Haze *et al.*, 2009). To test this possibility, we have evaluated the effect of AMBN on bone formation both *in vitro* and in various animal models. Taken together, the results indicate that AMBN is not involved in mechanically-induced bone formation and in repair of non-critical size bone defects. It should be noted here that under experimental conditions known to reveal the presence of AMBN, the protein has



Fig. 5. DNA microarray analysis of gene expression for osteogenic molecules in healing bone three days post-surgery. Position 4 corresponds to the AMBN cDNA; no signal is evident.

so far not been immunodetected in bone after post-natal day 28 (Spahr *et al.*, 2006). We, similarly, have not been able to immunodetect AMBN in normal bone around the experimental sites. Real time PCR and DNA microarray analyses also showed no significant expression of AMBN. Whole genome analyses of tibial healing bone similarly showed no significant expression of enamel proteins, including Amel and Ambn (unpublished data).

While EDTA decalcification may lead to extraction of some proteins in bone, thereby affecting detectability, it was shown that fixation efficiently retains various non-collagenous matrix proteins (McKee *et al.*, 1991). With respect to molecular biology, samples were left calcified and the quality of the RNA verified. It is thus unlikely that the detection of AMBN was altered. Furthermore, AMBN^{Δ5-6} mice in which enamel formation is abrogated showed no evident defect in bone development (Fukumoto *et al.*, 2004; Wazen *et al.*, 2009). Hence, it can be concluded that AMBN is not needed for normal physiological bone formation.

Overexpression of AMBN in both primary and transformed osteogenic cells did not result in significant changes in mineral deposition. While it cannot be excluded that the level of expression may be a limiting factor, the cells showed immunolabelling patterns typical of actively synthesising cells, and the protein was clearly secreted and accumulated in the culture medium. Iizuka *et al.*

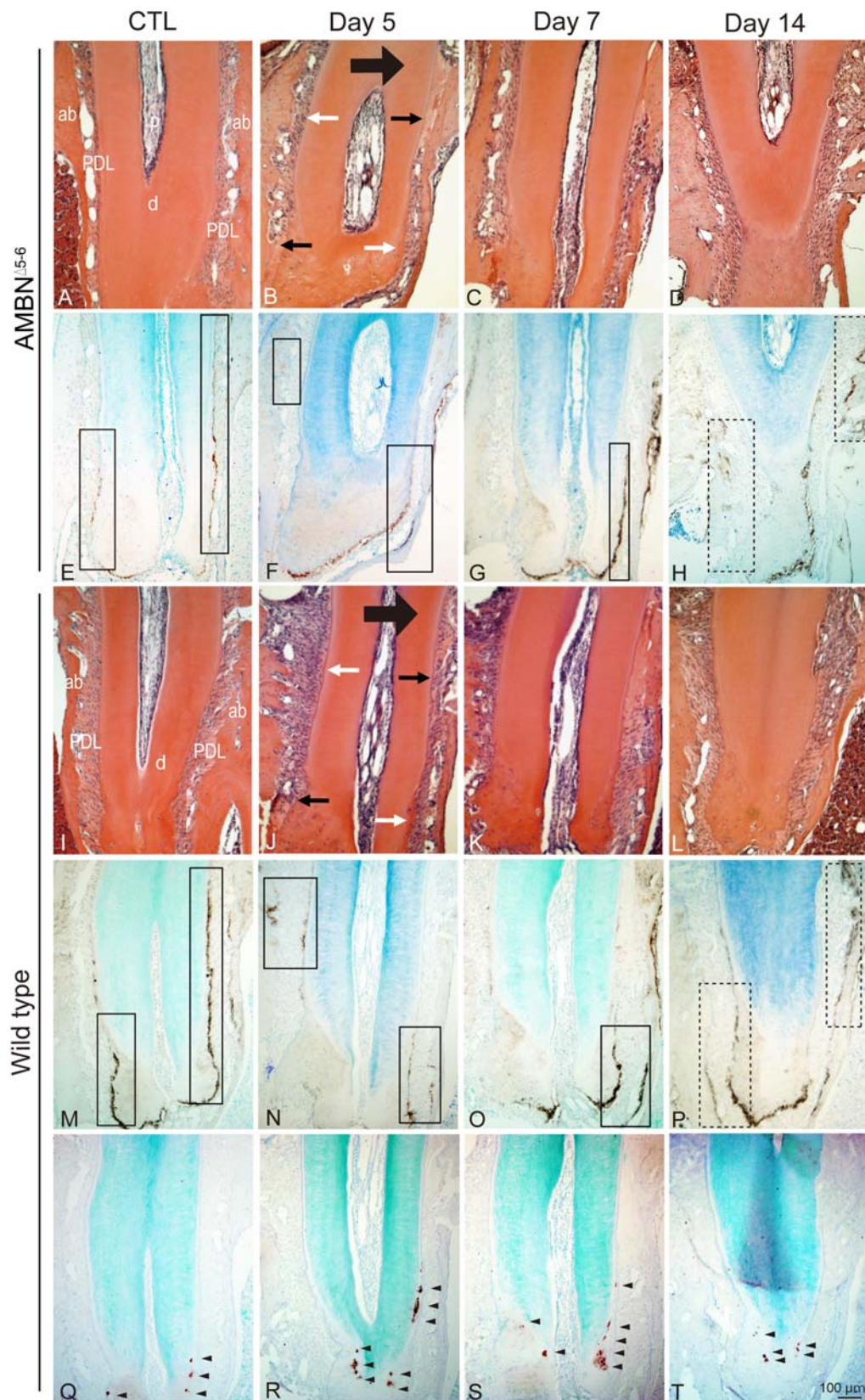


Fig. 6. Expression of Brill and AMBN during periodontal tissue remodelling in $AMBN^{\Delta 5-6}$ and WT mice. Immunolabelling of Brill (**E-H**, **M-P**) and AMBN (**Q-T**) and haematoxylin-eosin staining (**A-D**, **I-L**) are shown. When the mechanical stress was applied to the tooth toward the palate (large black arrow), the width of periodontal ligament (PDL) was decreased on the compression areas (black arrows) and increased on the tension areas (white arrows) (**B**, **J**). Immunolabelling for Brill was shown in cells on the surface of alveolar bone (ab) and cementum on the tension areas (boxed areas) at days 5 and 7 and control subjects (**E-G**, **M-O**). At day 14, Brill expression was present on the surface of alveolar bone on the compression areas (**H**, **P**, boxed areas with dotted border). In WT mice, AMBN was only detected in the cellular cementum (**Q-T**, arrowheads). d, dentin.

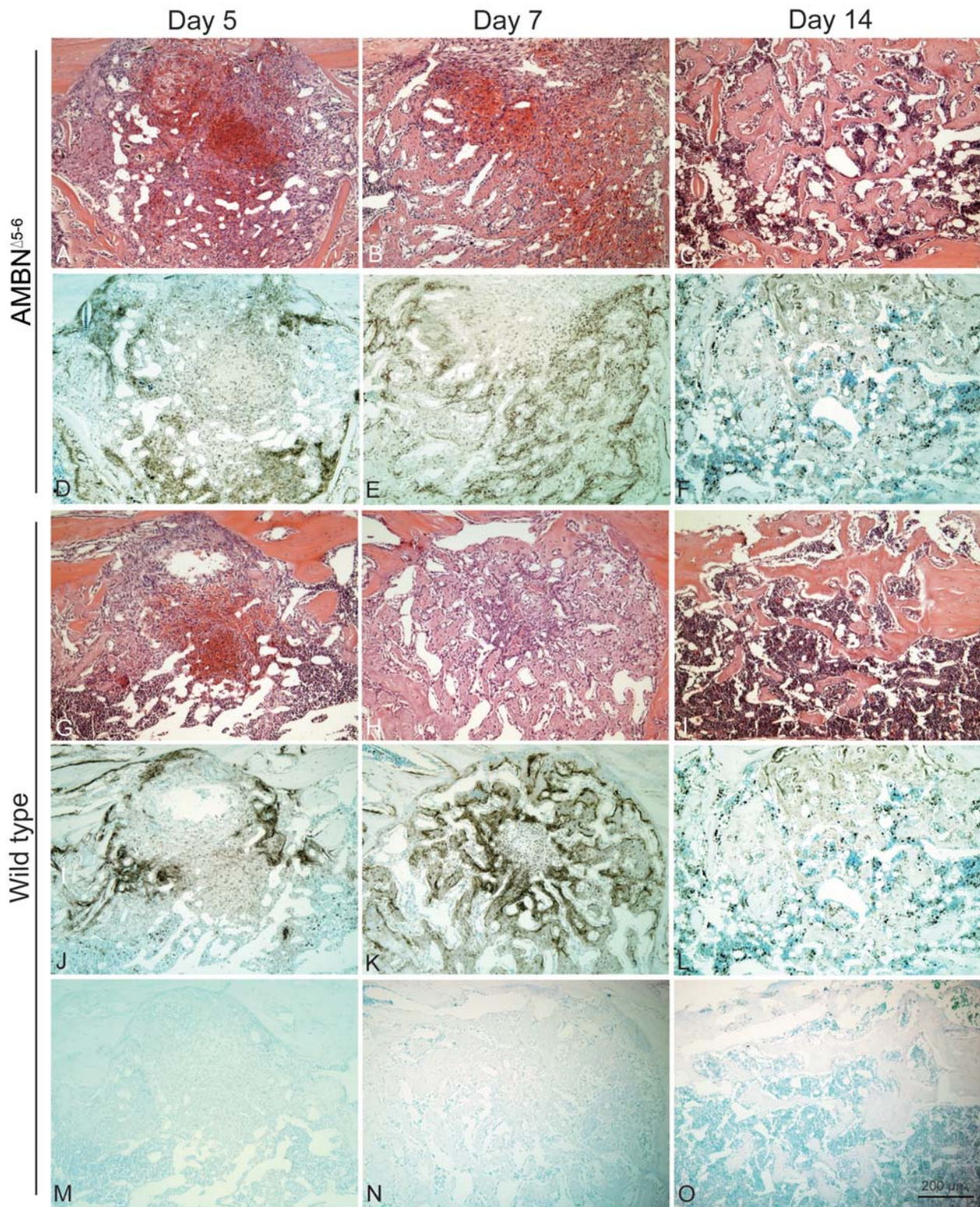


Fig. 7. Expression of Bril and AMBN in the tibial bone defects in $AMBN^{\Delta 5-6}$ and WT mice. Immunolabelling of Bril (**D-F, J-L**) and AMBN (**M-O**) and haematoxylin-eosin staining (**A-C, G-I**) are shown. Bone formation started at day 5 and the defect was almost completely repaired by day 14 (**A-C, G-I**). Bril expression started from the bone surrounding the defect at day 5 after surgery (**D, J**). Its expression became more intense toward the centre of the defect at day 7 (**E, K**), and was diminished at day 14 (**F, I**). The temporal patterns of Bril expression and of bone regeneration in $AMBN^{\Delta 5-6}$ mice corresponded to those in wild type mice. AMBN expression was not detected in the defect at any time points of healing (**M-O**).

(2011) have reported that expression of CD63 is essential for AMBN activity. The MC3T3-E1 cell line used in this study expresses CD63 but the SaOS-2 cell line does not (unpublished), yet no effect on mineral nodule formation was detected with both cell lines. Since positive expression of CD63 has been reported in both cell lines (Pereira *et al.*, 2009; Shapiro *et al.*, 2007), discrepancies in results could be explained by the source of cell lines used and/or cell transformation following multiple passages.

We used Bril as a marker of bone formation. *In vitro* functional analyses reveal that expression of Bril increases with osteoblast differentiation, peaking with matrix production and bone mineralisation (Moffatt *et al.*, 2008). This osteoblastic protein is also conspicuously present along bone surfaces where there is active formation (Moffatt *et al.*, 2008). The enhancement of Bril expression, when new bone formation is induced mechanically or in situations of bone repair, validates the use of Bril for evaluating osteogenesis. Both during ETM and BDT, the expression pattern of Bril in AMBN^{Δ5-6} and wild type mice was very similar. Since bone formation progresses in the same manner in both normal and mutant mice, AMBN is not needed for bone remodelling in craniofacial bone under mechanical stress and for repair of bone defects in long bones in mice.

Spahr *et al.* (2006) initially reported the expression of AMBN in rat embryo bone, using immunohistochemistry and *in situ* hybridisation, and proposed that AMBN participates in bone development. On the other hand, they also showed that expression decreased markedly with time and disappeared after completion of bone modelling (Spahr *et al.*, 2006), suggesting no involvement in the physiologic maintenance of adult bone. While no impairment of bone formation is evident in the AMBN mutant mice (Wazen *et al.*, 2009), recent studies – also reported by Fukumoto *et al.* (2004) – suggested a positive role for AMBN in bone generation *in vivo* and *in vitro* (Tamburstuen *et al.*, 2010; Tamburstuen *et al.*, 2011; Iizuka *et al.*, 2011). Tamburstuen *et al.* (2010) showed the expression of AMBN mRNA and protein secretion in human mesenchymal stem cells, primary osteoblasts and chondrocytes. They also demonstrated, using a microarray technique, that the genes related to immune responses, expression of cytokines and markers of osteogenic cell differentiation were up-regulated by the application of recombinant AMBN in cell culture (Tamburstuen *et al.*, 2011). Iizuka *et al.* (2011) concluded, in their *in vitro* investigation of sarcoma cell lines, that AMBN was expressed in osteoblasts and acted as a promoting factor for osteogenic differentiation *via* a pathway through the interaction between CD63 and integrin β1. Tamburstuen *et al.* (2010) also claimed that recombinant AMBN induced new bone formation in their bone defect model. While our results differ, they do not rule out the possibility that AMBN might be implicated in embryonic bone development. Indeed, the bone-active portion of the molecule could be positioned on the portion of the molecule expressed in the mutant (Wazen *et al.*, 2009). A full-knockout is needed to address this question. Another possibility is that compensatory mechanisms kick-in to make up for the defective AMBN molecule. This

is a plausible scenario when considering that substantial cellular and molecular factors are involved in bone remodelling processes, and bone is a vital tissue/organ without which life as we know would not be possible (Raggatt and Partridge, 2010).

In conclusion, our results suggest that AMBN does not influence osteogenic activity *in vitro*, under the expression conditions used, and does not participate in craniofacial bone remodelling under mechanical stress and in repair of non-critical bone defects in long bones. While AMBN does not appear to have a role in physiological bone formation, it cannot be excluded that it may be advantageously exploited pharmacological for tissue repair and healing. This is indeed the case for AMEL (Bosshardt, 2008; Haze *et al.*, 2009), another enamel matrix protein which has evolved from a common ancestor with AMBN (Sire *et al.*, 2007). While our *in vitro* results are not conclusive on this aspect, animal studies as initiated by Tamburstuen *et al.* (2010) are needed to unequivocally address the possibility of a pharmacological effect.

Acknowledgements

We extend our thanks to Ms Cynthia Török for technical assistance. This study was supported by the Canadian Institutes of Health Research. Pierre Moffatt is supported by the Shriners of North America.

References

- Atkins GJ, Anderson PH, Findlay DM, Welldon KJ, Vincent C, Zannettino AC, O'Loughlin PD, Morris HA (2007) Metabolism of vitamin D3 in human osteoblasts: evidence for autocrine and paracrine activities of 1 alpha,25-dihydroxyvitamin D3. *Bone* **40**: 1517-1528.
- Bosshardt DD (2008) Biological mediators and periodontal regeneration: a review of enamel matrix proteins at the cellular and molecular levels. *J Clin Periodontol* **35** (8 Suppl): 87-105.
- de Oliveira PT, Zalzal SF, Irie K, Nanci A (2003) Early expression of bone matrix proteins in osteogenic cell cultures. *J Histochem Cytochem* **51**: 633-641.
- Fukumoto S, Kiba T, Hall B, Iehara N, Nakamura T, Longenecker G, Krebsbach PH, Nanci A, Kulkarni AB, Yamada Y (2004) Ameloblastin is a cell adhesion molecule required for maintaining the differentiation state of ameloblasts. *J Cell Biol* **167**: 973-983.
- Haze A, Taylor AL, Haegewald S, Leiser Y, Shay B, Rosenfeld E, Gruenbaum-Cohen Y, Dafni L, Zimmermann B, Heikinheimo K, Gibson CW, Fisher LW, Young MF, Blumenfeld A, Bernimoulin JP, Deutsch D (2009) Regeneration of bone and periodontal ligament induced by recombinant amelogenin after periodontitis. *J Cell Mol Med* **13**: 1110-1124.
- Hu JC, Yamakoshi Y, Yamakoshi F, Krebsbach PH, Simmer JP (2005) Proteomics and genetics of dental enamel. *Cells Tissues Organs* **181**: 219-231.

- Iizuka S, Kudo Y, Yoshida M, Tsunematsu T, Yoshiko Y, Uchida T, Ogawa I, Miyauchi M, Takata T (2011) Ameloblastin regulates osteogenic differentiation by inhibiting Src kinase via crosstalk between integrin β 1 and CD63. *Mol Cell Biol* **31**: 783-792.
- Irie K, Zalzal S, Ozawa H, McKee MD, Nanci A (1998) Morphological and immunocytochemical characterization of primary osteogenic cell cultures derived from fetal rat cranial tissue. *Anat Rec* **252**: 554-567.
- Kawasaki K, Weiss KM (2003) Mineralized tissue and vertebrate evolution: the secretory calcium-binding phosphoprotein gene cluster. *Proc Natl Acad Sci USA* **100**: 4060-4065.
- Krebsbach PH, Lee SK, Matsuki Y, Kozak CA, Yamada KM, Yamada Y (1996) Full-length sequence, localization, and chromosomal mapping of ameloblastin. A novel tooth-specific gene. *J Biol Chem* **271**: 4431-4435.
- McKee MD, Nanci A, Landis WJ, Gotoh Y, Gerstenfeld LC, Glimcher MJ (1991) Effects of fixation and demineralization on the retention of bone phosphoprotein and other matrix components as evaluated by biochemical analyses and quantitative immunocytochemistry. *J Bone Miner Res* **6**: 937-945.
- Moffatt P, Salois P, St-Amant N, Gaumont MH, Lanctôt C (2004) Identification of a conserved cluster of skin-specific genes encoding secreted proteins. *Gene* **334**: 123-131.
- Moffatt P, Gaumont MH, Salois P, Sellin K, Bessette MC, Godin E, de Oliveira PT, Atkins GJ, Nanci A, Thomas G (2008) Bril: a novel bone-specific modulator of mineralization. *J Bone Miner Res* **23**: 1497-1508.
- Nanci A, Zalzal S, Gotoh Y, McKee MD (1996) Ultrastructural characterization and immunolocalization of osteopontin in rat calvarial osteoblast primary cultures. *Microsc Res Tech* **33**: 214-231.
- Nanci A, Zalzal S, Lavoie P, Kunikata M, Chen WY, Krebsbach PH, Yamada Y, Hammarström L, Simmer JP, Fincham AG, Snead ML, Smith CE (1998) Comparative immunochemical analyses of the developmental expression and distribution of ameloblastin and amelogenin in rat incisors. *J Histochem. Cytochem.* **46**: 911-934.
- Nanci A, Wazen RM, Zalzal SF, Fortin M, Goldberg HA, Hunter GK, Ghitescu DL (2004) A tracer study with systemically and locally administered dinitrophenylated osteopontin. *J Histochem Cytochem* **52**: 1591-1600.
- Pereira BP, Zhou Y, Gupta A, Leong DT, Aung KZ, Ling L, Pho RW, Galindo M, Salto-Tellez M, Stein GS, Cool SM, van Wijnen AJ, Nathan SS (2009) Runx2, p53, and pRB status as diagnostic parameters for deregulation of osteoblast growth and differentiation in a new pre-chemotherapeutic osteosarcoma cell line (OS1). *J Cell Physiol* **221**: 778-788.
- Raggatt LJ, Partridge NC (2010) Cellular and molecular mechanisms of bone remodeling. *J Biol Chem* **285**: 25103-25108.
- Sakai Y, Balam TA, Kuroda S, Tamamura N, Fukunaga T, Takigawa M, Takano-Yamamoto T (2009) CTGF and apoptosis in mouse osteocytes induced by tooth movement. *J Dent Res* **88**: 345-350.
- Schmittgen TD, Livak KJ (2008) Analyzing real-time PCR data by the comparative C_T method. *Nat Protoc* **3**: 1101-1108.
- Schroeder HE (1991) The rate of the eruption of human teeth. A review. *Schweiz Monatsschr Zahnmed* **101**: 279-284.
- Shapiro JL, Wen X, Okamoto CT, Wang HJ, Lyngstadaas SP, Goldberg M, Snead ML, Paine ML (2007) Cellular uptake of amelogenin, and its localization to CD63, and Lamp1-positive vesicles. *Cell Mol Life Sci* **64**: 244-256.
- Sire JY, Davit-Béal T, Delgado S, Gu X (2007) The origin and evolution of enamel mineralization genes. *Cells Tissues Organs* **186**: 25-48.
- Smith CE, Wazen R, Hu Y, Zalzal SF, Nanci A, Simmer JP, Hu JC (2009) Consequences for enamel development and mineralization resulting from loss of function of ameloblastin or amelogenin. *Eur J Oral Sci* **117**: 485-497.
- Spahr A, Lyngstadaas SP, Slaby I, Pezeshki G (2006) Ameloblastin expression during craniofacial bone formation in rats. *Eur J Oral Sci* **114**: 504-511.
- Stanford CM, Jacobson PA, Eanes ED, Lembke LA, Midura RJ (1995) Rapidly forming apatitic mineral in an osteoblastic cell line (UMR 106-01 BSP). *J Biol Chem* **270**: 9420-9428.
- Tamburstuen MV, Reppe S, Spahr A, Sabetrasekh R, Kvalheim G, Slaby I, Syversen U, Lyngstadaas SP, Reseland JE (2010) Ameloblastin promotes bone growth by enhancing proliferation of progenitor cells and by stimulating immunoregulators. *Eur J Oral Sci* **118**: 451-459.
- Tamburstuen MV, Reseland JE, Spahr A, Brookes SJ, Kvalheim G, Slaby I, Snead ML, Lyngstadaas SP (2011) Ameloblastin expression and putative autoregulation in mesenchymal cells suggest a role in early bone formation and repair. *Bone* **48**: 406-413.
- Wang D, Christensen K, Chawla K, Xiao G, Krebsbach PH, Franceschi RT (1999) Isolation and characterization of MC3T3-E1 preosteoblast subclones with distinct *in vitro* and *in vivo* differentiation/mineralization potential. *J Bone Miner Res* **14**: 893-903.
- Wazen RM, Moffatt P, Zalzal SF, Daniel NG, Westerman KA, Nanci A (2006) Local gene transfer to calcified tissue cells using prolonged infusion of a lentiviral vector. *Gene Ther* **13**: 1595-1602.
- Wazen RM, Moffatt P, Zalzal SF, Yamada Y, Nanci A (2009) A mouse model expressing a truncated form of ameloblastin exhibits dental and junctional epithelium defects. *Matrix Biol* **28**: 292-303.

Discussion with Reviewer

Reviewer II: Have you tried different concentrations of the AMBN virus?

Authors: For each cell line, we have tested the effect of AMBN viral vectors at different doses ranging from 1×10^5 to 6×10^6 (in triplicates). Since we did not see a significant difference at any viral dose and to avoid repetition, we chose to show only one representative experiment for each cell line.

Reviewer II: Couldn't you use a dental epithelial cell line that will eventually show differences after AMBN virus infection as a control?

Authors: A dental epithelium cell line could indeed be used as a control to show the effect of over expressing AMBN. However, the fact remains that after infection primary osteogenic cells, MC3T3-E1 and SaOS2 cells do express

AMBN and that such expression under the conditions we have used does not result in any enhanced osteogenic activity. Indeed, our animal studies confirm that AMBN is not needed for normal bone formation and repair to take place. This, however, would not rule out the possibility that large supraphysiological doses of AMBN may have a pharmacological effect.